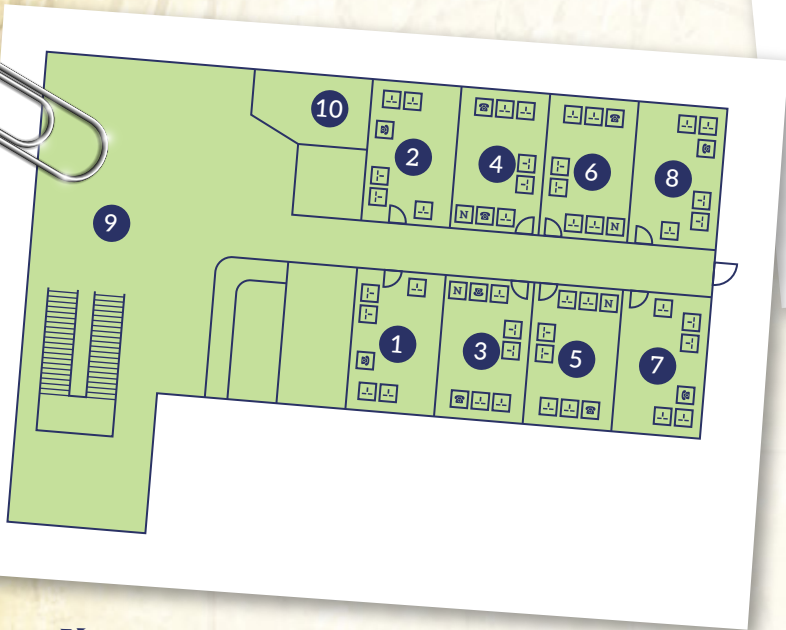
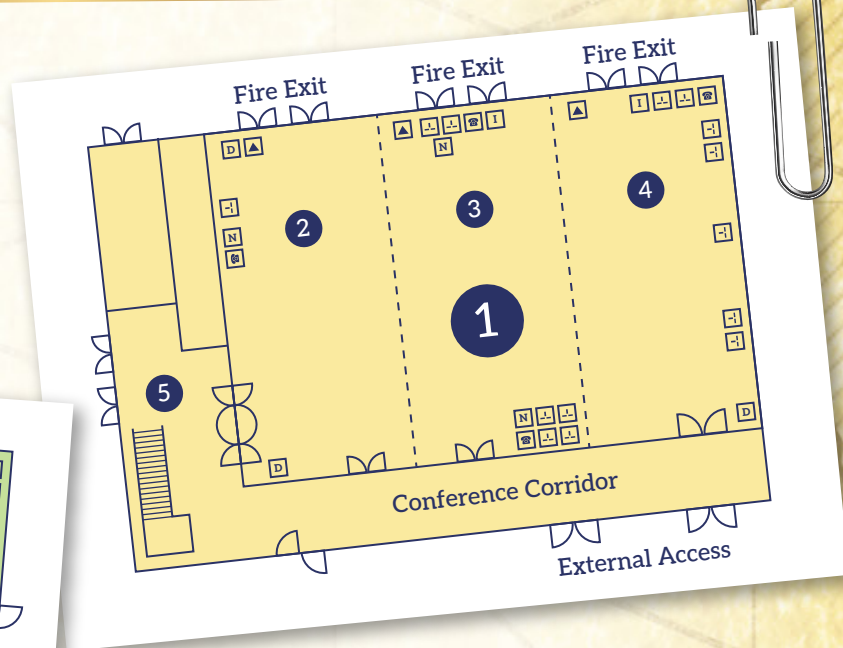


The Conference Centre

Ground Floor

1. The Stateroom*
2. Endeavour
3. Explorer
4. Voyager
5. The Stateroom Lobby

*The Stateroom can be split into smaller meeting rooms (section 2, 3 and 4).



Second floor Syndicate Rooms

1. Hex
2. Port
3. Nemesis
4. Starboard
5. Oblivion
6. Telescope
7. Galactica
8. Compass
9. Sir Algenon's Lounge
10. The Business Centre

Key

- D DMX Lighting
- Telephone Line
- Electrical Socket Control
- I TV/Radio Aerial
- Three-Phase Power Socket 63 amp
- N Network Point

Dimensions

	The Stateroom	Endeavour	Explorer	Voyager	Syndicate Rooms									
					Hex	Port	Nemesis	Starboard	Oblivion	Telescope	Galactica	Compass	Port and Starboard	Telescope and Compass
Height (m)	4	4	4	4	2.88	2.88	2.88	2.88	2.88	2.88	2.88	2.88	2.88	2.88
Width (m)	17	10	10	10	5	5	5	5	5	5	5	5	7	7
Length (m)	31	17	17	17	7	7	7	7	7	7	7	7	10	10
Area (sq.m)	527	170	170	170	35	35	35	35	35	35	35	35	70	70
Natural Daylight	Yes	Yes	Yes	Yes	Yes	Yes	Yes	Yes	Yes	Yes	Yes	Yes	Yes	Yes
Air Conditioning	Yes	Yes	Yes	Yes	Yes	Yes	Yes	Yes	Yes	Yes	Yes	Yes	Yes	Yes